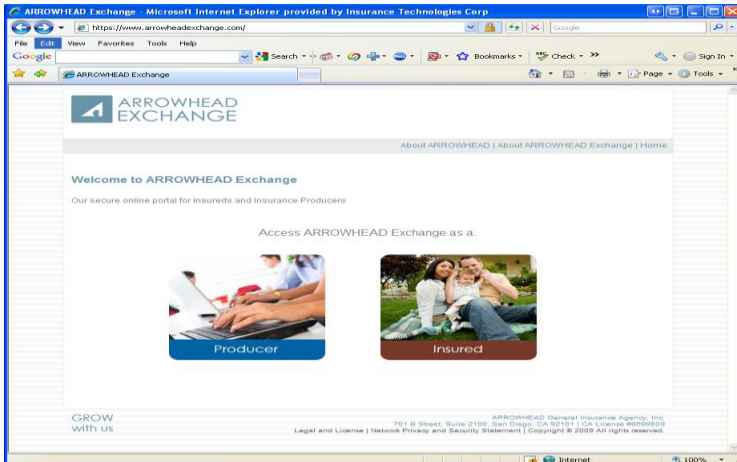
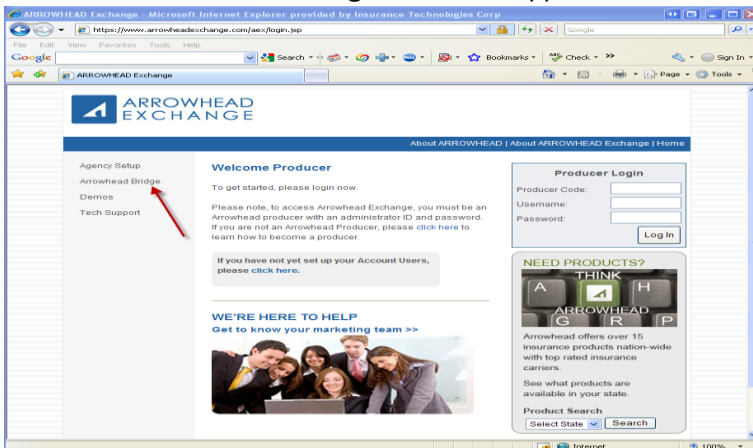


# Arrowhead Meritplan bridge setup instructions

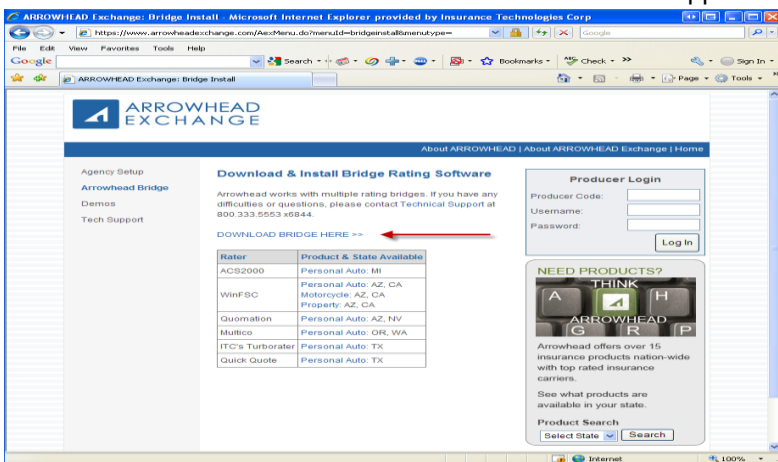
1. You will need to go to Arrowhead's website to download the bridge file: <https://www.arrowheadexchange.com/>
2. Click on the **Producer** button in the middle of the screen.



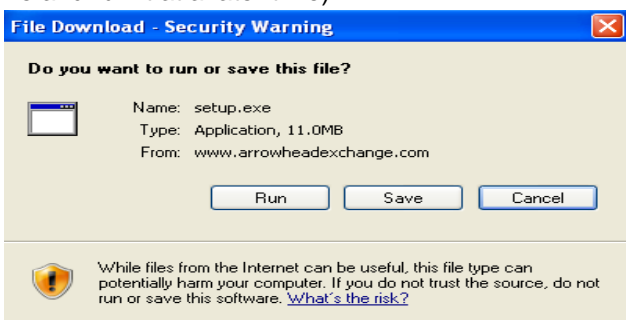
3. Click on the **Arrowhead Bridge** link on the upper left side of the screen.



4. Click on the **DOWNLOAD BRIDGE HERE >>** link in the upper middle of the screen above the chart for comparative raters.



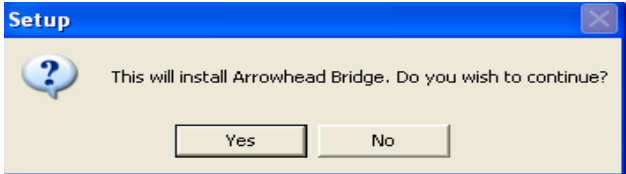
5. The **File Download – Security Warning** box will appear, click on **Run** (or **Save** if you would like to download the setup.exe file and run it at a later time).



6. The download will begin and then an **Internet Explorer – Security Warning** box will appear, click on **Run**.

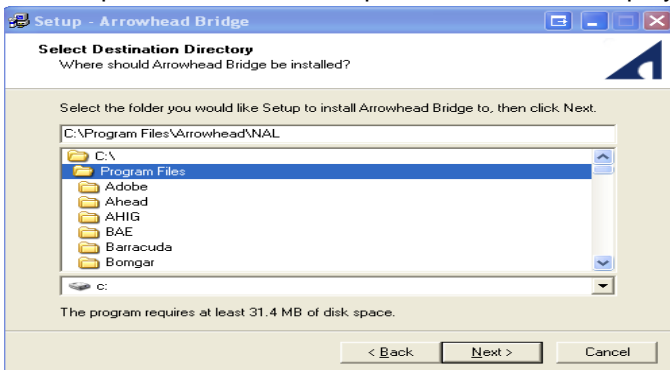


7. Click on the **Yes** button when you are asked if you wish to continue with the installation.

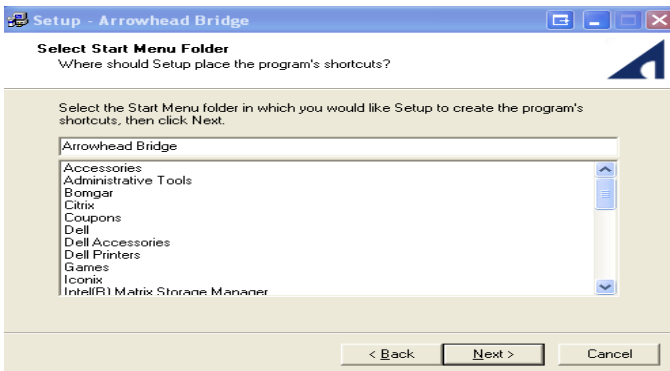


8. Click on **Next** on the **Welcome** screen.

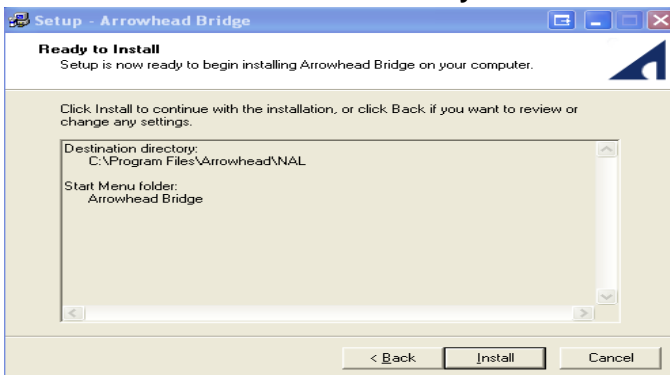
9. You will then be asked to select a location to install the Arrowhead bridge. We suggest that you leave the default path, since the Comparative rater has this path defaulted and displayed under the company setup for Arrowhead. Click on **Next**.



10. Click on **Next** on the **Select Start Menu Folder** screen.



11. Click on the **Install** button on the **Ready to Install** screen.



12. The installation will begin. Once it has completed, click on **Finish**.

13. You can then close the Arrowhead website and start bridging from the ITC Comparative WebRater. The default path for the bridge is located under **Edit Producer Codes**.